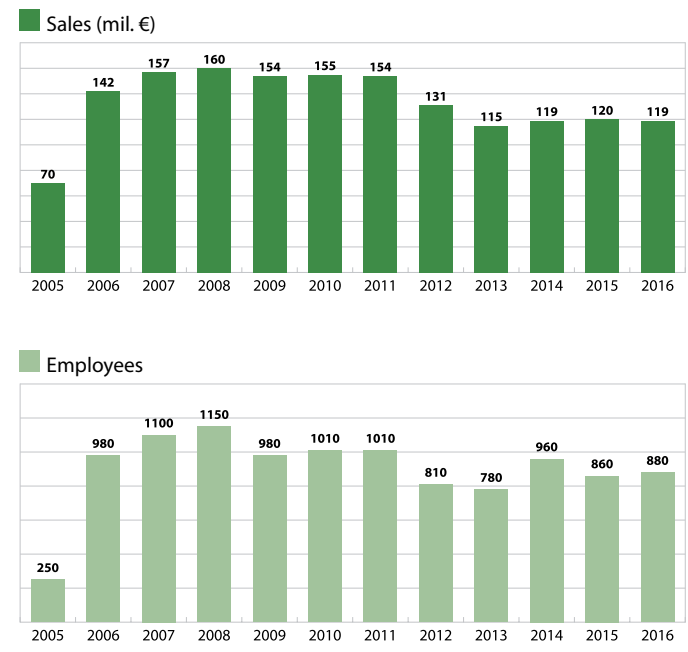


COMPANY PROFILE

Company name: Futaba Czech, s.r.o.
Location: Baštínov 130
580 01 Havlíčkův Brod
Czech Republic

Establishment: 2002, Dec. 11th
Employees: approx. 960
Total investment: 3.8 mld. CZK
Land Space: 132,101 m²
Floor Space: 45,702 m²
Major Customers: OEM 100 %, TPCA (Czech Republic)
TMMF (France)
MSC (Hungary)
PSA (France)
Jaguar Land Rover (Austria)



OWNERSHIP

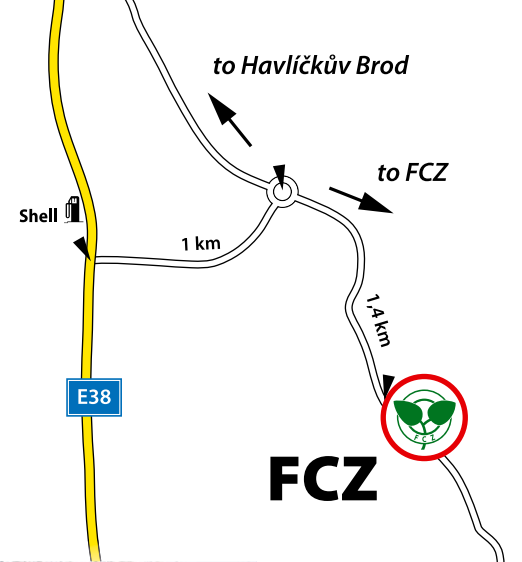
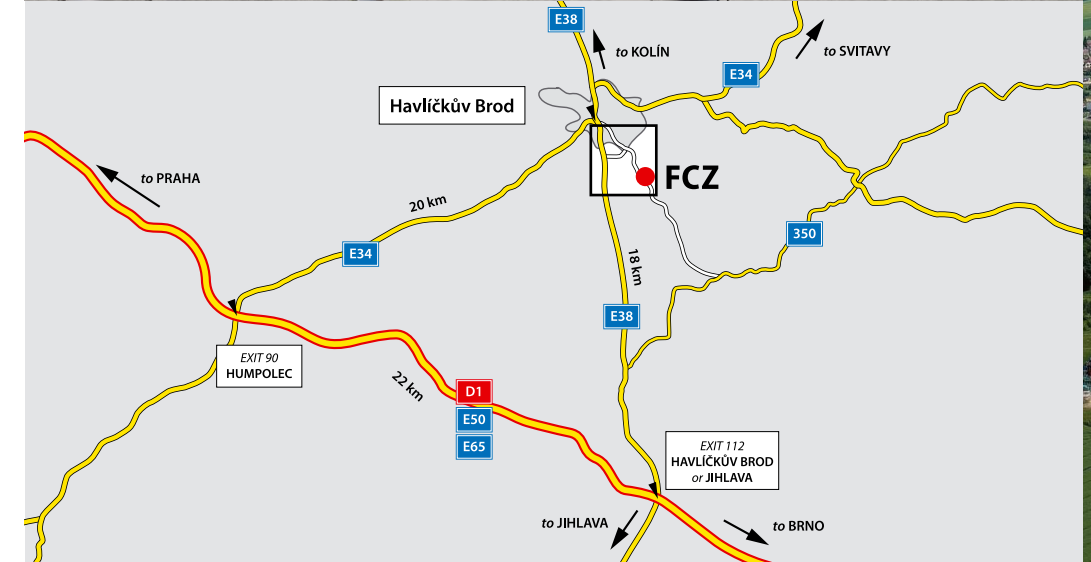
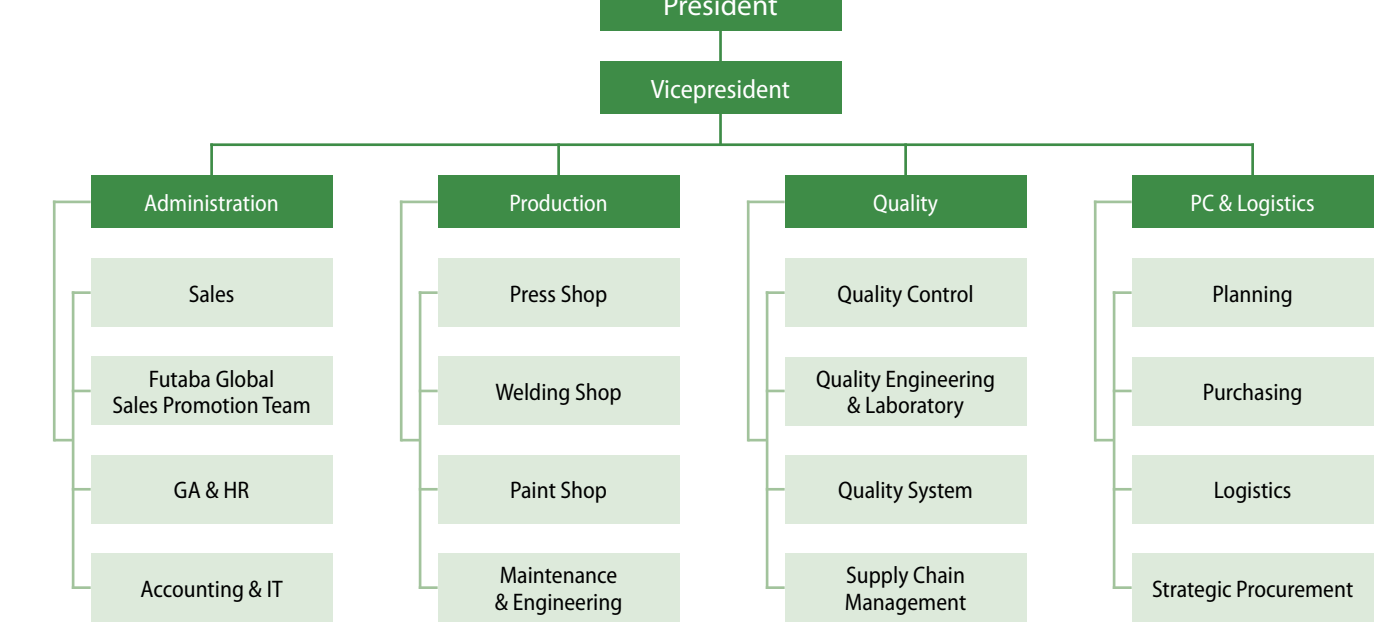
85 % Futaba Industrial Co., Ltd. (Japan)
9 % Toyota Tsusho Corporation (Japan)
6 % Toyota Tsusho Europa S.A. (Belgium)

COMPANY MILESTONES

- 2002 Investor of the Year
- 2002 company establishment, Dec. 11th
- 2003 Ground Breaking Ceremony, June 2nd
- 2004 First delivery, Sept. 3rd
- 2005 Grand Opening Ceremony, June 1st
- 2007 FCZ achieves ISO 9001, ISO / TS 16949 Certification
- 2008 FCZ achieves ISO 14001 Certification
- 2010 FCZ achieves OHSAS 18001 Certification
- 2014 start of the new project for TPCA
- 2015 Futaba Global Sales Promotion Team establishment
- 2017 start of the new project for Jaguar Land Rover



COMPANY STRUCTURE



Futaba Czech, s. r. o.
“Quality Products at Lower Cost”

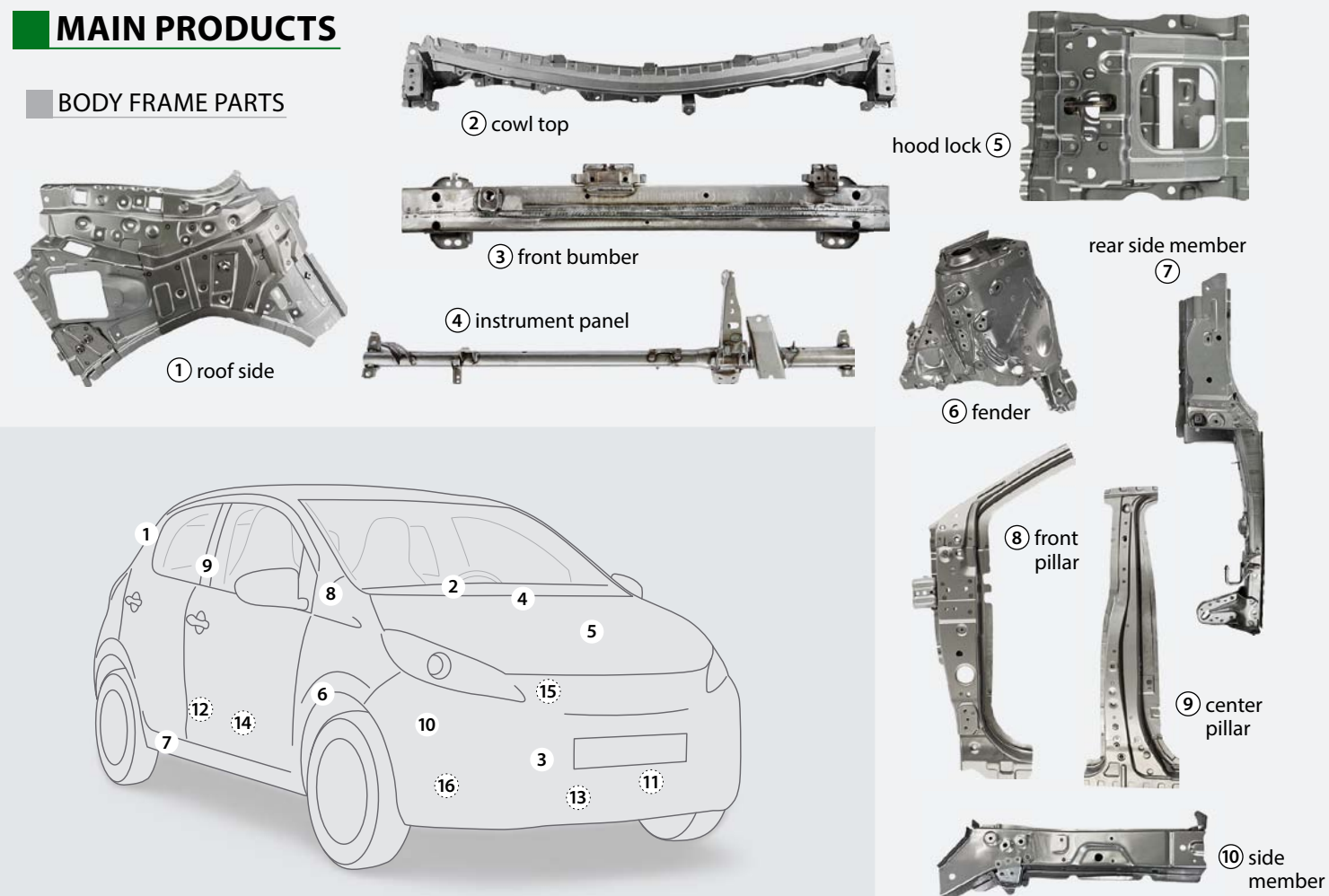


Futaba Czech, s. r. o.
Baštínov 130, 580 01 Havlíčkův Brod
Tel.: (+420) 569 496 400, E-mail: info@fcz.cz

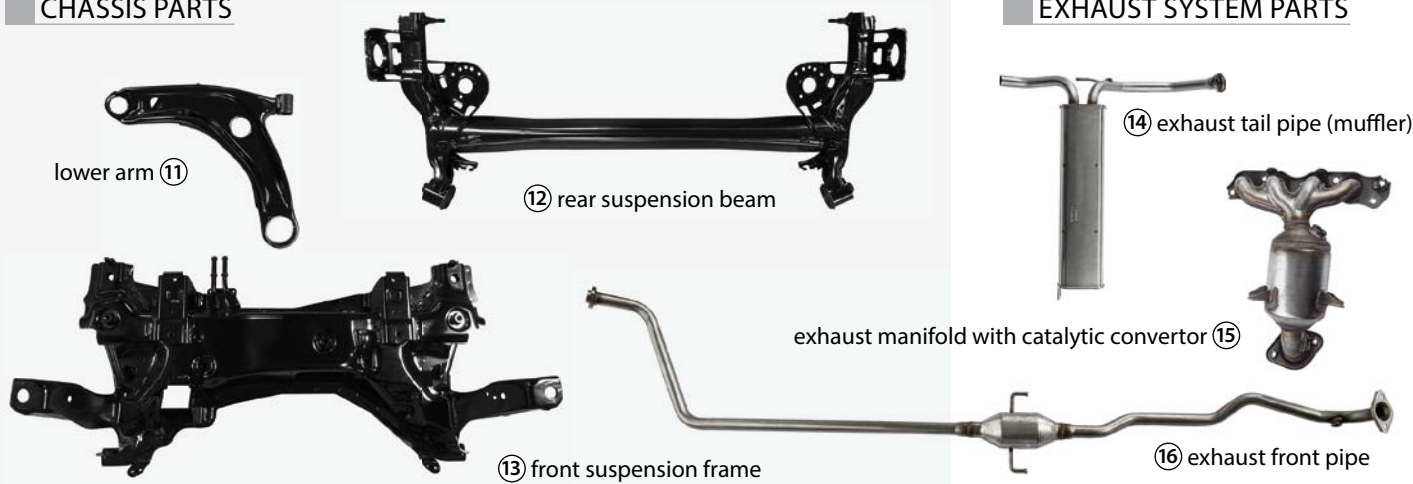
www.fcz.cz

MAIN PRODUCTS

BODY FRAME PARTS



CHASSIS PARTS



Toyota Aygo



Toyota Yaris



Suzuki Vitara

The foundation of manufacturing in FCZ lies in supplying “quality products at lower cost” at the demanded time. We always keep this fundamental principle in mind as we strive to become the global leader in production technology, commercial value and cost competitiveness.

FCZ is a professional body with stamping and welding technology at its core, constantly driving to establish new production technologies. The number and variations in equipment, such as press machinery and robots, surpasses that of all other companies.

PRODUCTION FLOW-CHART “FROM PRESS SHOP TO LOGISTICS”



1 Stamping material preparation



2 Stamping



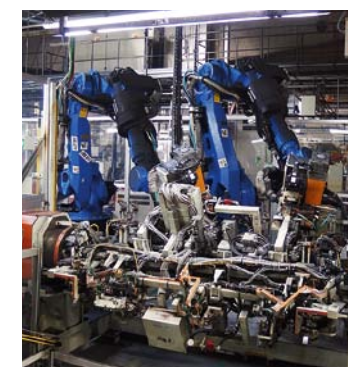
3 7 m roller chute connecting press and welding shops



4 Parts distribution



5 Parts prepared for welding



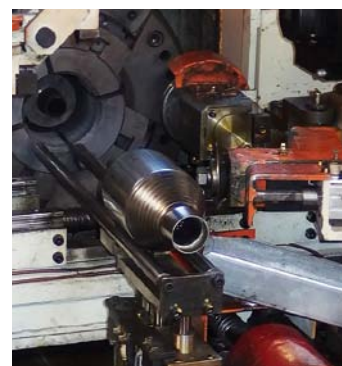
6 Welding



7 Parts preparation for delivery



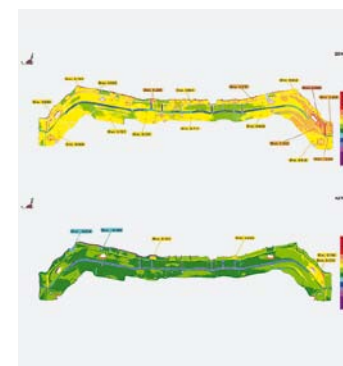
Bending



Spinning



Laboratory



3D measurement



Painting line



Painted parts



ANDON production boards

PRODUCTION EQUIPMENT

Stamping

- 3 × transfer press machine 2,000 t
- 1 × transfer press machine 1,500 t
- 2 × transfer press machine 800 t
- 1 × progressive press machine 1,000 t
- 1 × progressive press machine 500 t
- 2 × progressive press machine 300 t
- 3 × tandem press machine

Welding

- 85 × spot welding robot
- 104 × arc welding robot
- 66 × material handling robot
- 190 × stationary spot welding machine
- 12 × CNC tube bender machine
- 10 × spinning machine

Paintshop

- Cation painting line (250 × 550 × 1,400 mm; 37 kg)

Die Maintenance

- Die spotting press (3,000 × 3,000 mm)
- Milling machines
 - CNC milling machine (600 × 450 × 450 mm)
 - Horizontal boring mill (2,000 × 2,000 × 1,250 mm)
- Radial drilling machine
- Surface grinder
- Lathe machine